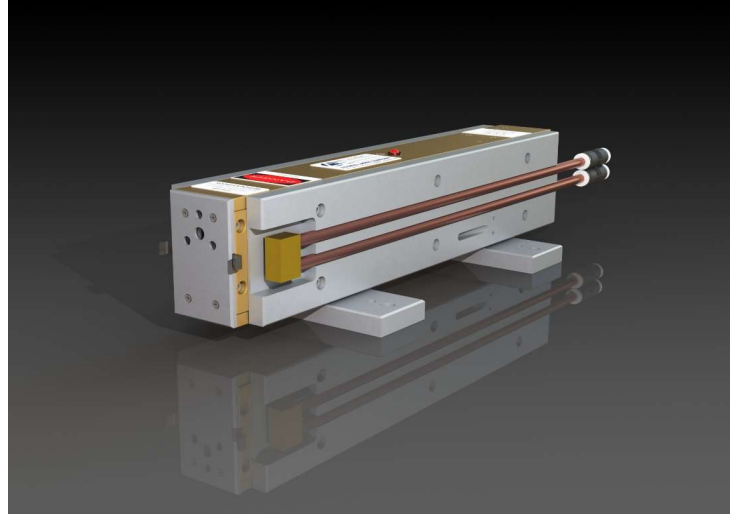




## L5-S-WCCL

Access Laser's L5-S is the power stabilized variant of our 5W product offerings with a guaranteed power stability of  $\pm 2\%$ . This RF excited sealed tube CO<sub>2</sub> laser is well suited for various high performance applications such as PCB marking. Providing a reliable and cost effective platform for OEM's and researchers alike.



### Dimensions & Weight

Laser Weight	7 lbs
Dimensions (L x W x H, inch)	12.5 x 2.5 x 2.3
RF Driver Weight	3 lbs

### Specifications

#### Laser Power

Wavelength ( $\mu\text{m}$ )	10.3 to 10.8	DC Power Requirements	
CW Power (W)	5	Supply Voltage	28VDC
<sup>2</sup> Peak Power (W)	5	Electronic PWM Parameters	Frequency up to 100KHz, Duty Cycle 0-100%
<sup>1</sup> Power Stability	$\pm 2\%$		

#### Beam Characteristics

Beam Waist Diameter (mm)	2.4	Heat & Cooling	
Waist Location	Output Coupler	Heat Dissipation	< 240W
<sup>2</sup> Mode Quality (M <sup>2</sup> )	<1.1	Cooling Requirement	Water Cooled Closed Loop
Full Div. Angle (mrad)	5.5	Working Temperature ( $^{\circ}\text{C}$ )	5 to 40

#### Optical Parameters

Polarization	Randomly Oriented Linear
--------------	--------------------------

Notes	Water Cooling	Options Available
<sup>1</sup> Power Stability calculated in CW at thermal equilibrium $\pm \frac{(P_{max} - P_{min})}{(P_{max} + P_{min})}$	Min Flow Rate: 1 LPM (0.264 GPM)	Real Time Power Monitoring
<sup>2</sup> Beam specifications measured at $\frac{1}{e^2}$	Recommended Flow Rate: 2 LPM (0.528 GPM)	Stabilization to $\pm 1\%$ with Line Tracker
	Max Pressure: 2.75 BAR (450 PSI)	<sup>18</sup> CO <sub>2</sub> & C <sup>18</sup> O <sub>2</sub> Isotope Gas Fills
	Required Chiller Stability of $\pm 0.1^{\circ}\text{C}$	Selective 10.3 $\mu\text{m}$ , 9.6 $\mu\text{m}$ and 9.3 $\mu\text{m}$ optics
	Storage Temperature Range: 5-50 $^{\circ}\text{C}$	
Average power may exceed listed value.		
All measured specs are at 10.59 $\mu\text{m}$ / 10P20.		
		All are specifications are subject to change without notice.